



Diebold Decoder (v2.0)

Diebold DDC ATM Decoder User Manual

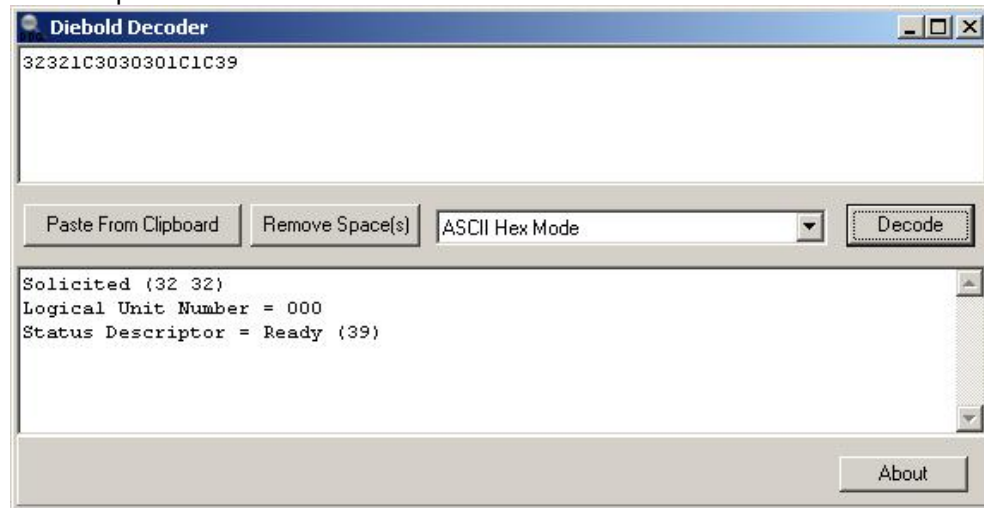
The Diebold Decoder provides three ways to decode DDC messages based on the input data.

1. ASCII Hex Format

- Copy DDC message in the clipboard.
- Select "ASCII Hex Mode" in the application drop down menu.



- Click "Paste From Clipboard" button, and click "Decode".
Make sure the the DDC data is presented in non-space-ASCII-Hex (ie. "32321C3030301C1C39") . If you have ASCII with space (ie. "32 32 1C 30 30 30 1C 1C 39"), you can simply click "Remove Space(s)" button to remove the spaces char.



2. Base24 NETADRD Hexa Format

- Copy DDC message in the clipboard.
- Select "Base24 NETADRD Hex Mode" in the application drop down menu.



- Click "Paste From Clipboard" button, and click "Decode".
To reproduce NETADRD dump log in hex mode make sure you specify "HEX" or "H" parameter.

Example:

H-	0:	31 31	1C 30	30 30	1C 1C	1C 31	33 1C	3B 35
	7:	35 37	37 39	31 31	30 31	33 33	39 32	38 31
	16:	36 3D	39 39	31 32	31 32	30 30	30 30	30 37
	25:	32 36	3F 1C	1C 41	41 20	20 20	20 43	20 1C
	34:	30 30	30 30	33 30	30 30	30 30	30 30	1C 3B
	43:	39 35	38 3B	39 37	3F 36	3C 33	30 34	32 37
	52:	36 1C	1C 1C	36 30	30 38	33 31	30 1D	44 49
	61:	30 31	1E 61	41 40	40 1E	30 30	30 30	30 30
	70:	30 30	30 30	30 30	30 30	30 30	30 30	30 30

3. String Format

- a. Copy DDC message in the clipboard.
- b. Select "String Mode" in the application drop down menu.



- c. Click "Paste From Clipboard" button, and click "Decode"